

PROSYS - eMIS MIS Automation Solutions

Prosys Infotech Private Limited : Newsletter for Private Circulation Only

August 2016 Volume 6 Issue 21

Accurate - Accessible - Actionable Information for All

MIS Automation (Business Intelligence) using Microsoft BI Technologies

Prosys designs and develops amazing customized MIS Automation (BI) Applications.

Prosys solutions are Non-Proprietary, they don't contain any source code and can easily be maintained by your IT teams. Consistent usage of Prosys solutions will get you business benefits like Improved DSO, Higher Inventory Turns, Reduced Working Capital, Faster Book Closure, etc..

Microsoft Business Intelligence – our reporting roadmap 2/2

by [SQL Server Team](#)

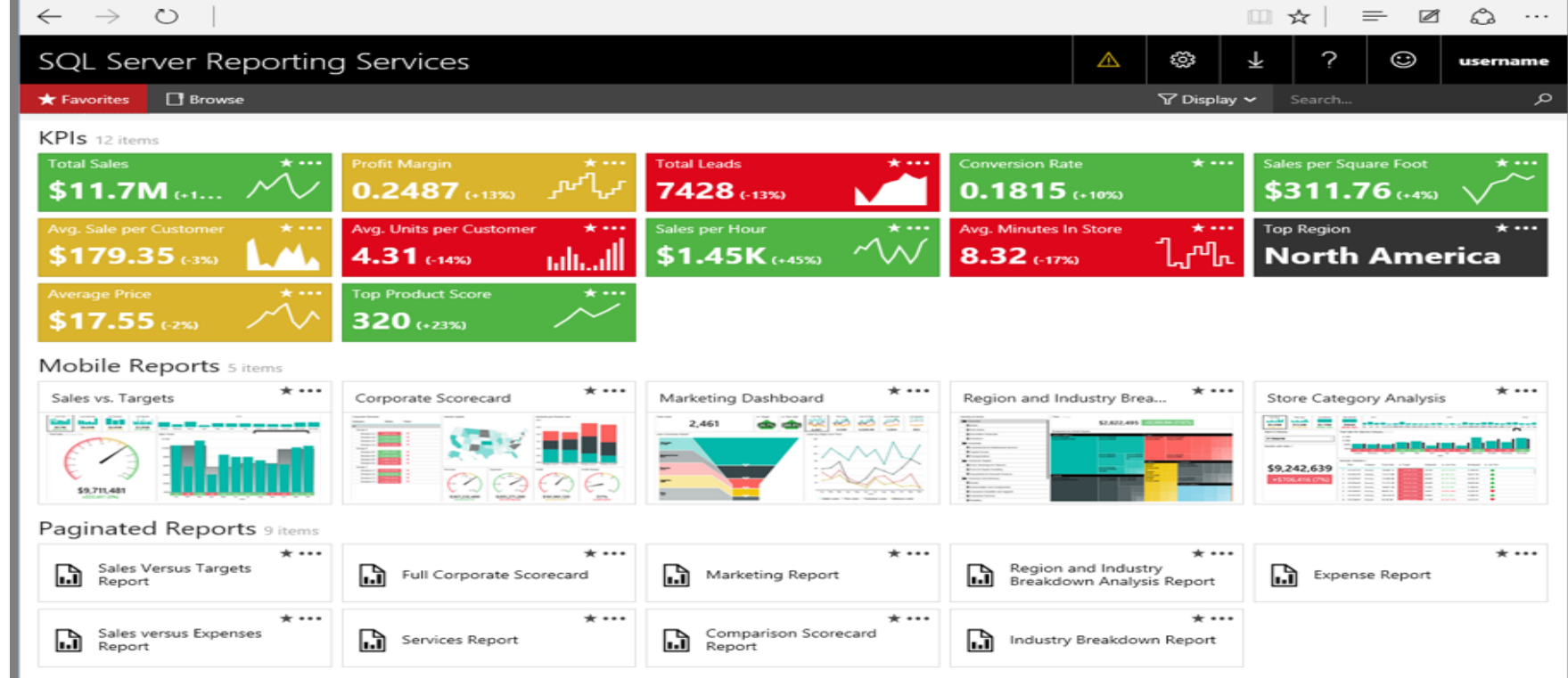
For eight consecutive years, Microsoft has been positioned as a Leader in the [Gartner Magic Quadrant for Business Intelligence and Analytics Platforms](#). And while each year has seen advances across our product line, this past year's progress is truly unprecedented. We firmly believe Microsoft now offers the industry's most complete and modern business intelligence product family – with unmatched breadth and depth.

At first approach, this depth can be overwhelming – how do all the components fit together? Where are things heading in the future? These are frequent questions from our customers and partners.

With the release of [SQL Server 2016](#), it's a great time to tackle those questions in a definitive blog.

Reporting Services is our on-premises solution for BI report delivery

SQL Server Reporting Services (SSRS) to date has focused on paginated reports and offers class-leading capabilities for that format. With SQL Server 2016 we are taking a leap forward by adding support for mobile reports. The addition of this new report type in SSRS is accompanied by an entirely new web experience for Reporting Services allowing users to access both paginated and mobile reports in one centralized location.

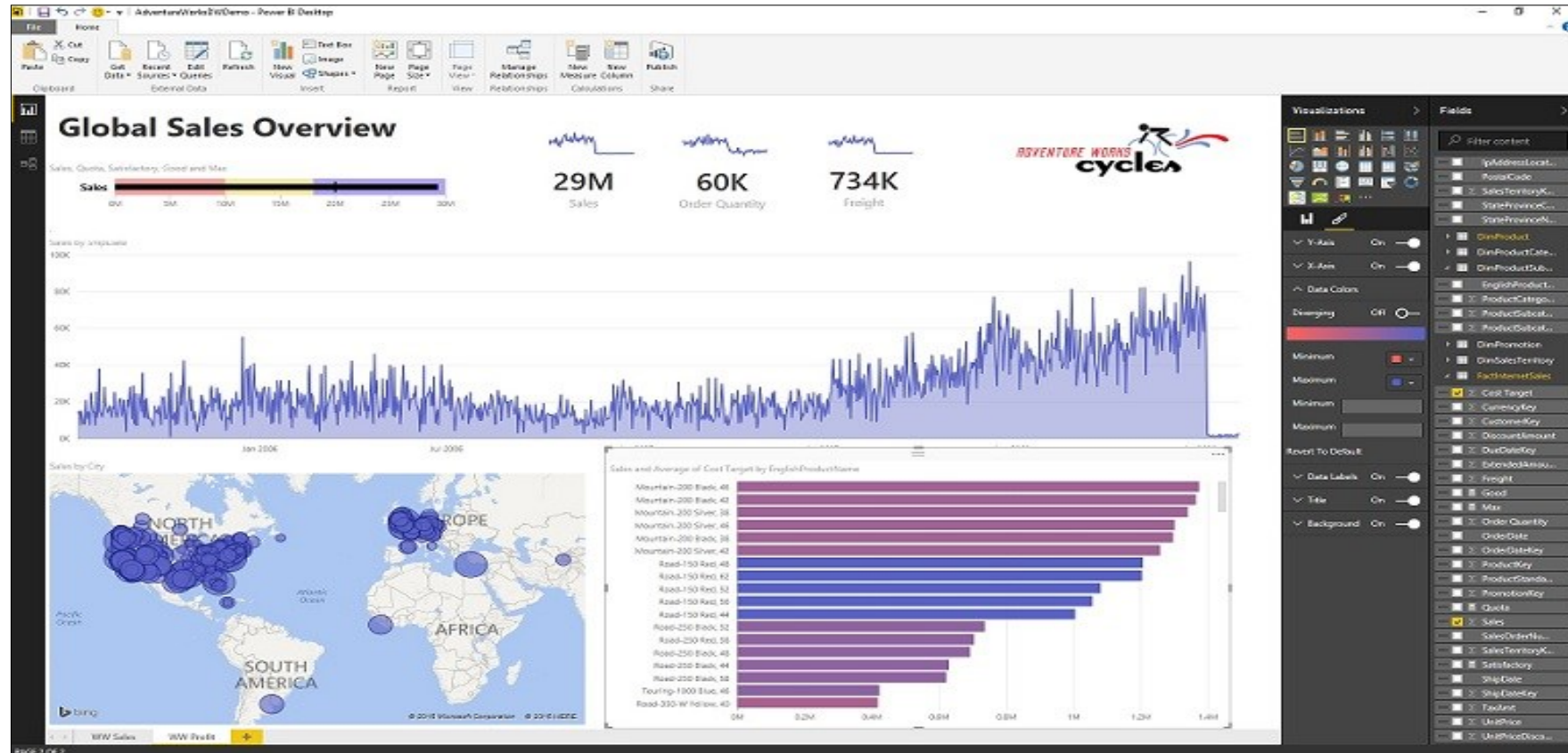


This modernized SSRS web experience delivers the foundation for centralized report consumption, embedding and sharing of BI reports for those organizations that desire an on-premises option (versus using Power BI in the cloud).

Please visit the [SSRS blog](#) to learn more about new functionality in SQL Server 2016.

Publish Power BI Desktop Reports on-premises

Power BI Desktop is a data discovery and interactive reporting tool allowing business analysts to connect, prepare, and visually explore data across a freeform canvas. It combines the strengths of Power Query to connect to a vast spectrum of data sources and easily shape data, Power Pivot for rich data blending and modeling, and next generation Power View to intuitively perform visual analytics and author compelling reports.



Based on the same technology as Power View, Power BI Desktop supports existing Power View reports and provides the future path to a HTML5 based interactive report experience on-premises.

Just as we've added mobile report delivery to SSRS in SQL Server 2016, we intend to add governed Power BI Desktop report delivery in the future. Today Power BI Desktop supports publishing of reports to Power BI; Power BI Desktop is free to use, [experience it yourself today](#).

Power BI Desktop

- [Get Data](#)
- [Recent Sources](#)
- [Open Other Reports](#)

Getting started with Power BI Desktop

Building reports

Query view concepts

Uploading your reports

[View all videos](#)

Show this page on startup

FORUMS
Visit the Power BI Forum to ask questions or interact with other users in the Power BI community.

POWER BI BLOG
Keep up to date with the latest news, resources, and updates from the Power BI team.

TUTORIALS
[Analyzing Sales Data](#)
[Facebook Analytics](#)
[Importing data from a Web page](#)

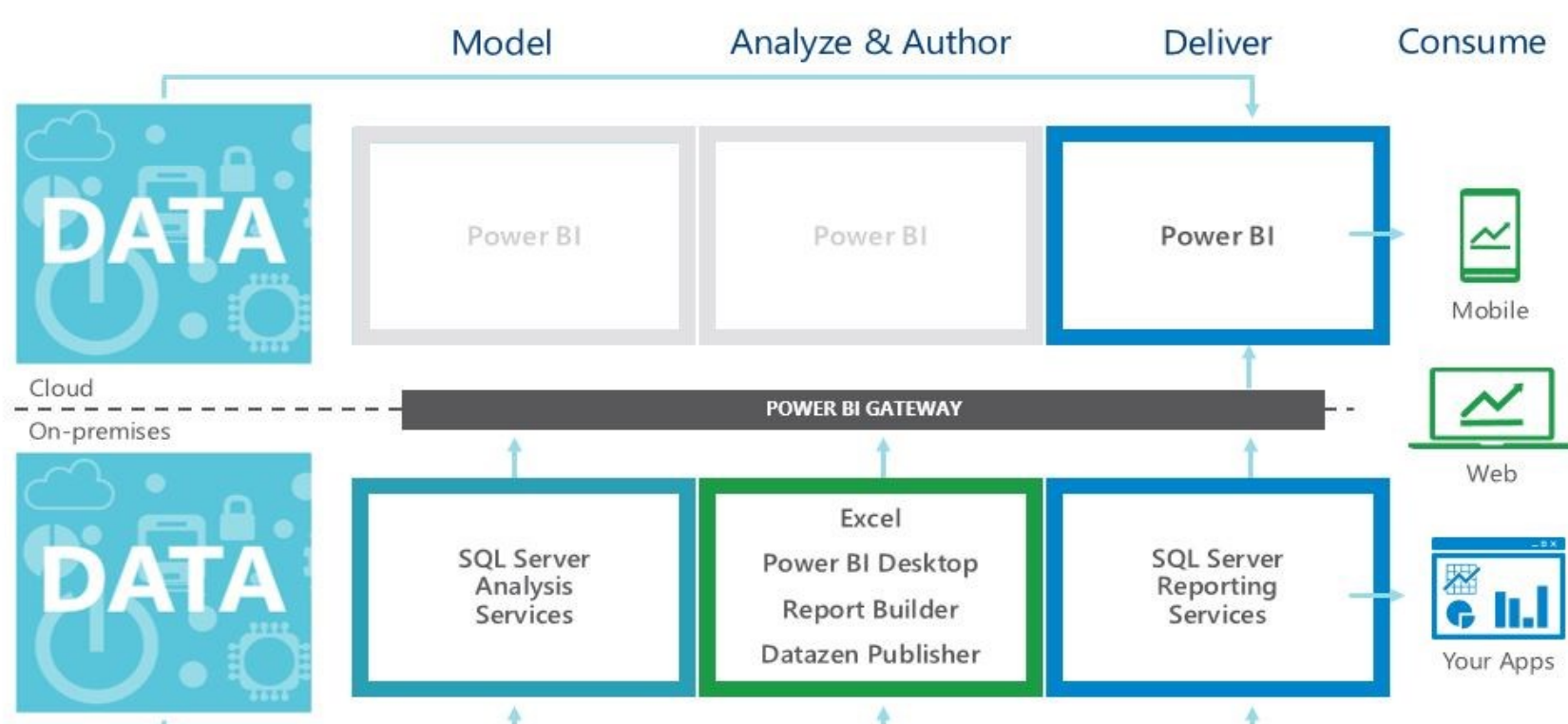
Unified Mobile BI experience

Whether using SQL Server Reporting Services on-premises, Power BI in the cloud, or both as your report delivery solution, we'll have a single mobile application (for each of Windows, iOS and Android) for consumption of all report types. At PASS Summit 2015 we demonstrated a single Power BI mobile application delivering a combination of report types from both SQL Server Reporting Services 2016 and the Power BI service. All of your BI content will be at your fingertips from within a single, unified mobile app to deliver insights any way, anywhere and from any device.



Symmetry across on-premises and cloud

As we continue to harmonize our offerings across cloud and on-premises, we continue to align technologies and tools across all parts of our BI platform.

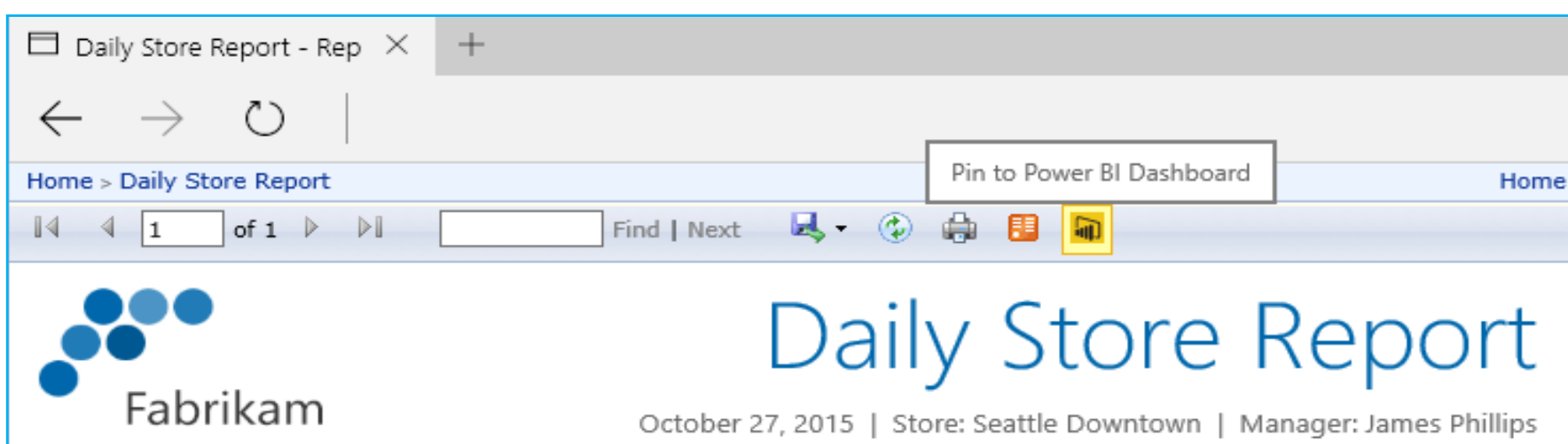


Mirroring technologies across on-premises and the cloud enables one to easily switch between the two. Our approach also offers unique hybrid capabilities needed in a big data world where data lives in many locations.

For example, you can use your existing on-premises SSAS multi-dimensional models with enforced row-level security as a data source for Power BI without moving your data to the cloud; or directly connect to data in an on-premises SQL Server database without requiring SSAS, again without requiring your data move to the cloud.



You can choose, manage and monitor on-premises-to-Power BI data connections using our forthcoming enterprise gateway capability. [Pin your favorite chart](#) from an operational SSRS report to a Power BI dashboard to leverage your existing reporting investments in SQL Server Reporting Services.



It's your data. We are here to empower you to drive your business based on insights gained from that data, whether your data is on-premises, in the cloud or a combination of the two.



Contact:

Prosys Infotech Private Limited, Survey 1/8/1, Salunke Crystal 2nd floor, Lane Opposite Bank of Maharashtra, NDA-Pashan Road, Pune 411021, INDIA.

Landline—020-65002583/84, Sanjay-9422034643 sanjay@prosysinfotech.com Rajeev-9422031214 rajeev@prosysinfotech.com [Unsubscribe](#)